



Organizational Structure

2006



Our Vision, Mission & Values

Vision

To be globally recognized as the foremost example of spiritual and multi-cultural leadership and service excellence.

Mission

We facilitate the practical integration of spiritual and cultural values into everyday life, through education, training and personal and collective example.

Our core values

Knowledge of self and supreme

Respect for cultural diversity

Integrity – walk the talk

Selfless service

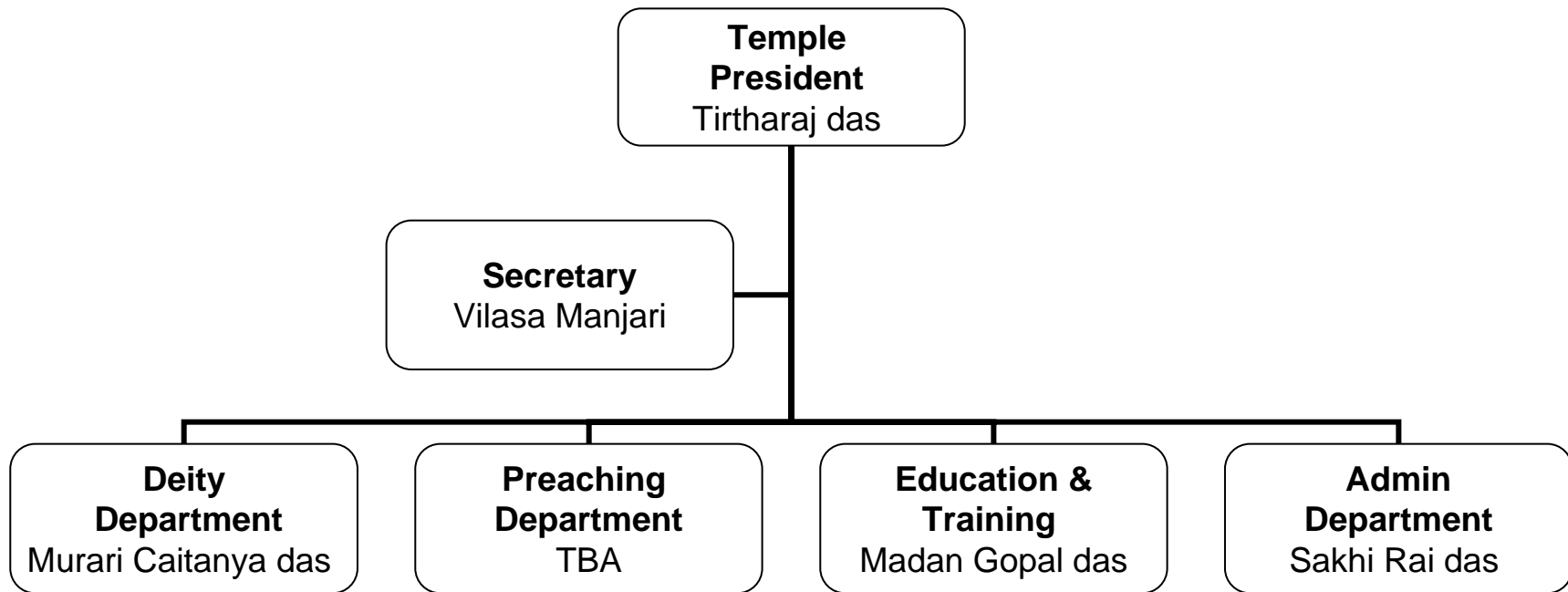
Healthy relationships

Nurture highest potential in individuals

Always remember Krishna and never forget Him.



Management Body





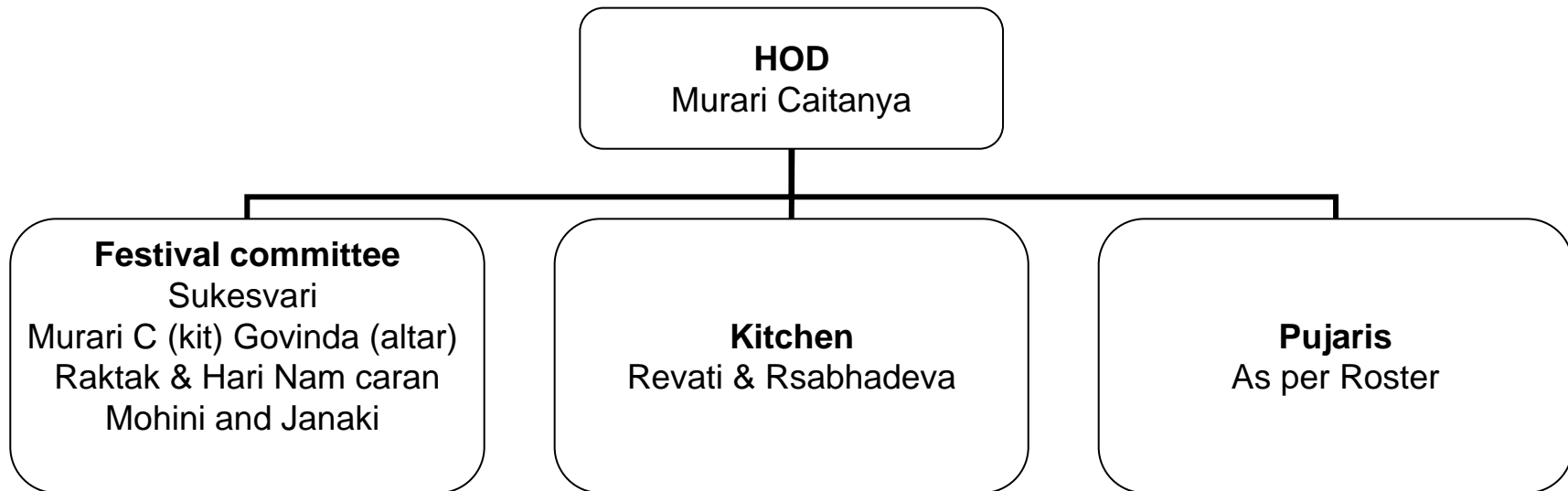
Deity Department Overview

To ensure the highest standards of worship are maintained for the pleasure of the Deities, through:

- Cleanliness & punctuality
- Training & education
- Festivals for the glorification of the Deities
- Prasadam distribution



Deity Department



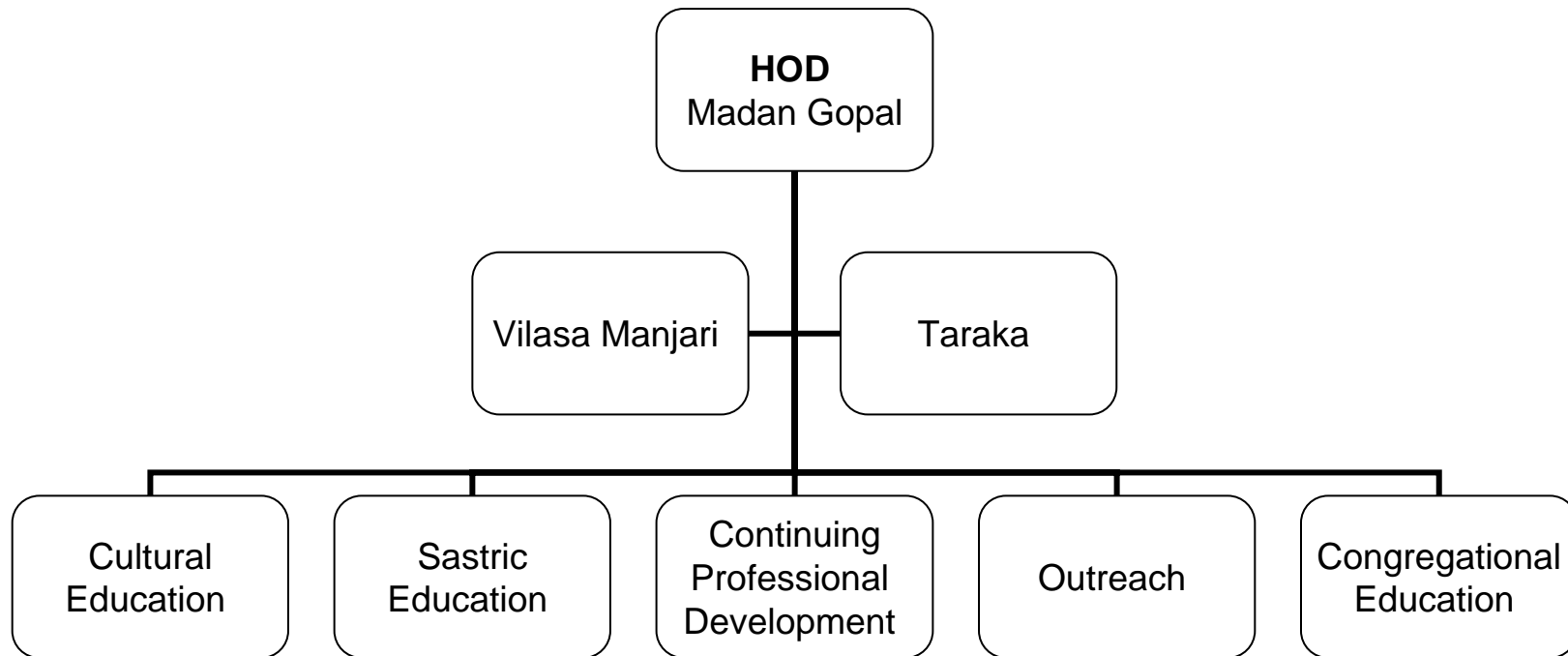


Education Department Overview

- To provide regular classes for our congregation members, outreach and serious devotees.
- Providing pathways for initiation and skill development to enhance service proficiency.



Education Department





Admin Department Overview

Treasury:

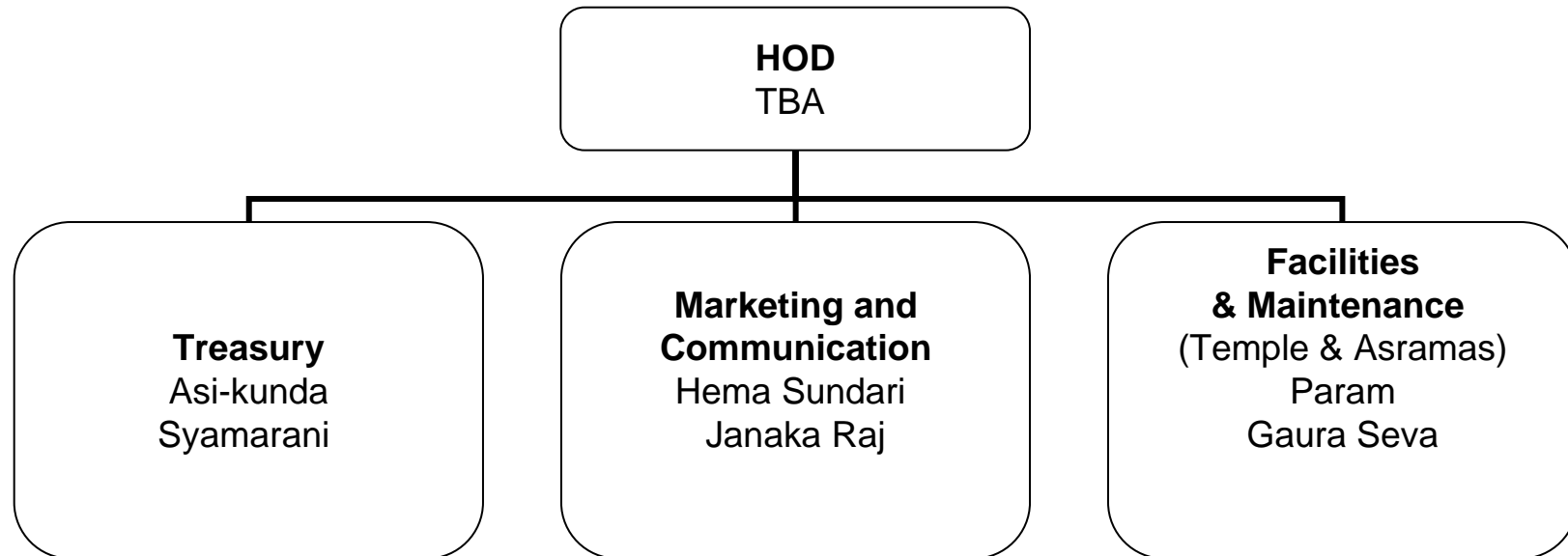
- To facilitate efficient & effective management of Temple resources.
- To provide regular reports on Temple progress.
- To develop systems & training for devotees to serve at their optimum

Maintenance/Facilities:

- To establish facilities to an excellent standard that provides a clean & sanctified environment for devotees & guests.



Administration Department





Preaching Department Overview

The board area of preaching encompasses:

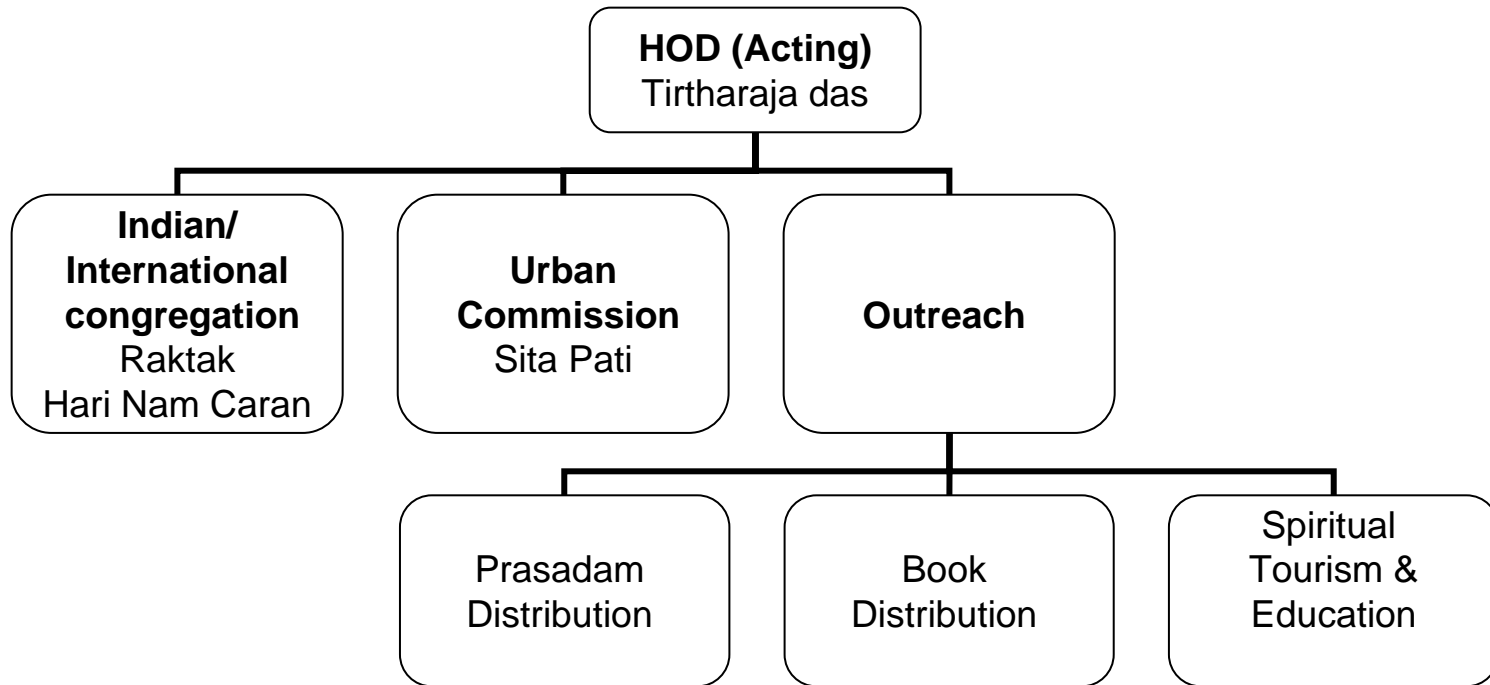
- Preaching to our Indian congregation
- Providing opportunities for the inquisitive, education groups and casual onlookers to gain an insight into Krsna Consciousness.

We do this through:

- Weekend Feast Programs, Restaurants, Festival Catering, School/ University programs, Home programs & Yoga classes.

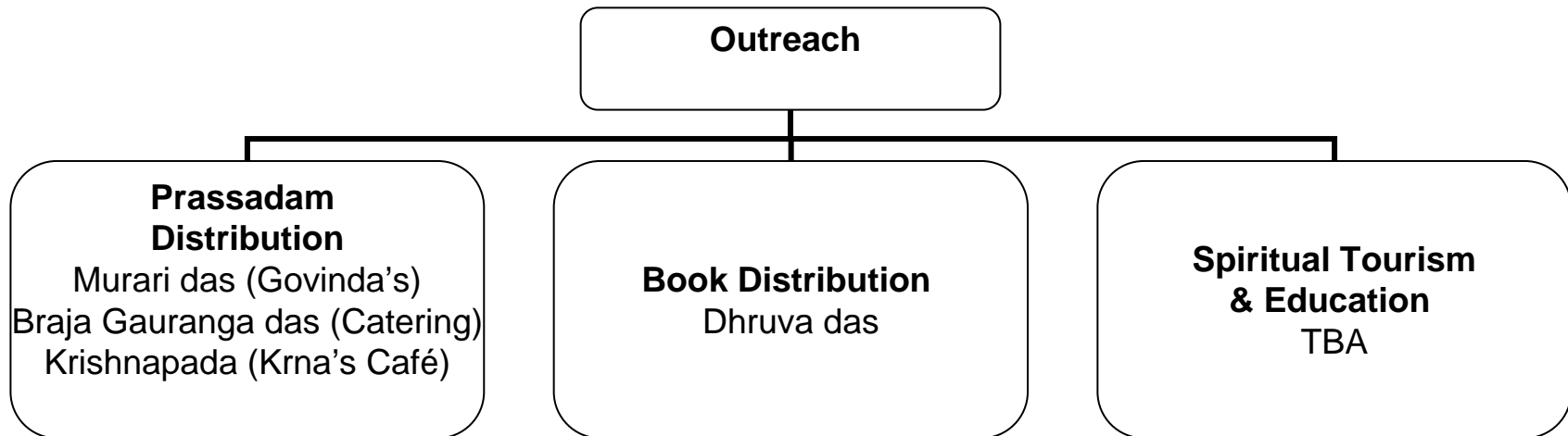


Preaching Department





Outreach (In Depth)





Where do we go from here?

- Monthly departmental and management meetings
- Communication strategy
- Procedures manuals
- Training programs



Hare Krishna

